

Freedom Operating

Project: Pawnee County, OK (NAD-83)
 Site: SEC 4 - T20N - R5E
 Well: Cimarron 1-33H
 Wellbore: OH
 Design: Plan #1



PROJECT DETAILS: Pawnee County, OK (NAD-83)

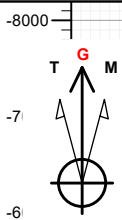
Geodetic System: US State Plane 1983
 Datum: North American Datum 1983
 Ellipsoid: GRS 1980
 Zone: Oklahoma Northern Zone
 North Reference: Grid
 System Datum: Mean Sea Level
 To convert a True Direction to a Grid Direction, Subtract 0.72°
 To convert a Magnetic Direction to a True Direction, Add 2.53° East
 To convert a Magnetic Direction to a Grid Direction, Add 1.81°

WELL DETAILS: Cimarron 1-33H

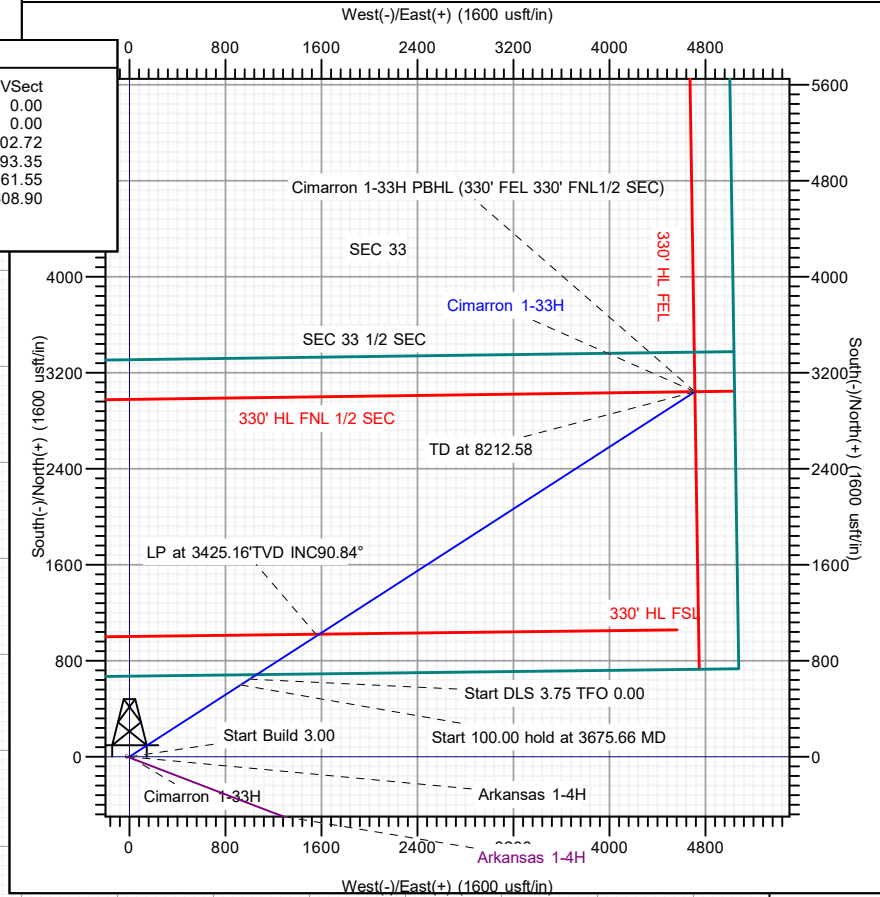
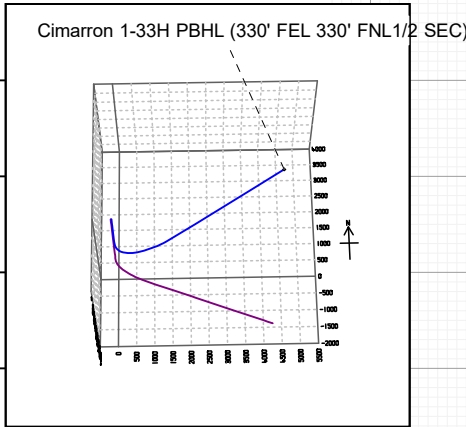
GL 1048' + 16' KB @ 1064.00usft
 +N/-S 0.00 +E/-W 0.00 Northing 455315.00 Easting 232775.00 Latitude 36° 14' 40.589 N Longitude 96° 46' 53.728 W

SECTION DETAILS

Sec	MD	Inc	Azi	TVD	+N/-S	+E/-W	Dleg	TFace	VSec
1	0.00	0.00	0.00	0.00	0.00	0.00	0.00	0.00	0.00
2	1509.00	0.00	0.00	1509.00	0.00	0.00	0.00	0.00	0.00
3	3675.66	65.00	57.16	3239.92	598.00	926.49	3.00	57.16	1102.72
4	3775.66	65.00	57.16	3282.18	647.15	1002.64	0.00	0.00	1193.35
5	4464.82	90.84	57.16	3425.16	1009.50	1564.05	3.75	0.00	1861.55
6	8212.58	90.84	57.16	3370.00	3041.60	4712.59	0.00	0.00	5608.90



Azimuths to Grid North
 True North: -0.72°
 Magnetic North: 1.81°
 Magnetic Field
 Strength: 50033.9nT
 Dip Angle: 64.19°
 Date: 05/05/2024
 Model: IGRF2015



DESIGN TARGET DETAILS							
Name	TVD	+N/-S	+E/-W	Northing	Easting	Latitude	Longitude
Cimarron 1-33H PBHL (330' FEL 330' FNL 1/2 SEC)	3370.00	3041.60	4712.59	458356.60	2332487.59	36° 15' 10.077 N	96° 45' 55.727 W

