

Freedom Operating

Project: Pawnee County, OK (NAD-83)
 Site: SEC 4 - T20N - R5E
 Well: Arkansas 1-4H
 Wellbore: OH
 Design: Plan #1



PROJECT DETAILS: Pawnee County, OK (NAD-83)

Geodetic System: US State Plane 1983
 Datum: North American Datum 1983
 Ellipsoid: GRS 1980
 Zone: Oklahoma Northern Zone
 North Reference: Grid
 System Datum: Mean Sea Level
 To convert a True Direction to a Grid Direction, Subtract 0.72°
 To convert a Magnetic Direction to a True Direction, Add 2.53° East
 To convert a Magnetic Direction to a Grid Direction, Add 1.81°

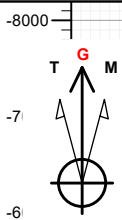
WELL DETAILS: Arkansas 1-4H

GL 1048' + 16' KB @ 1064.00usft

+N/-S	+E/-W	Northing	Easting	Latitude	Longitude
0.00	0.00	455316.00	2327755.00	36° 14' 40.601 N	96° 46' 53.972 W

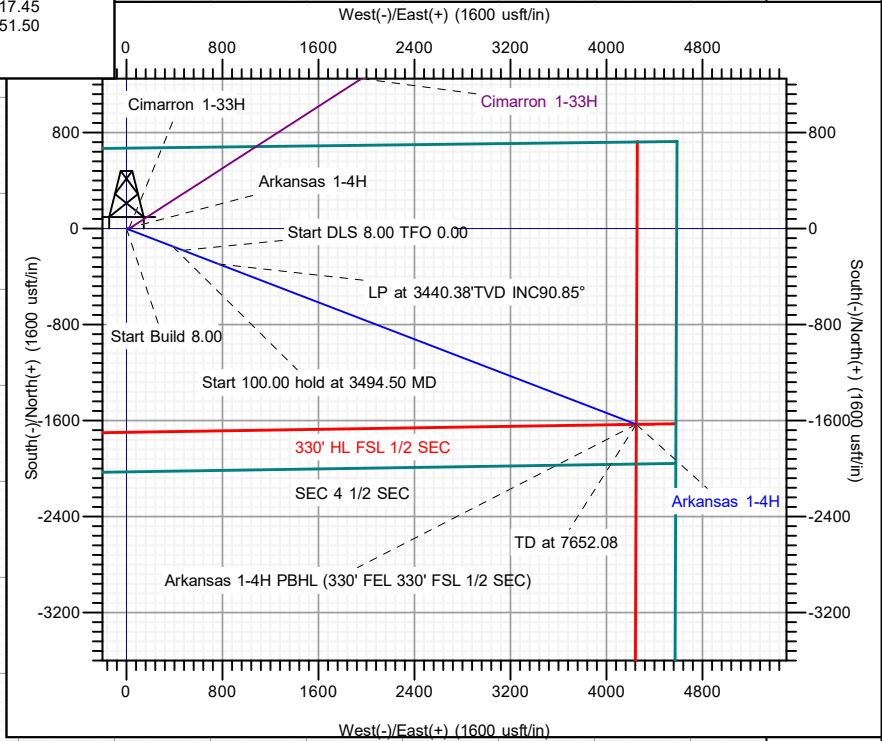
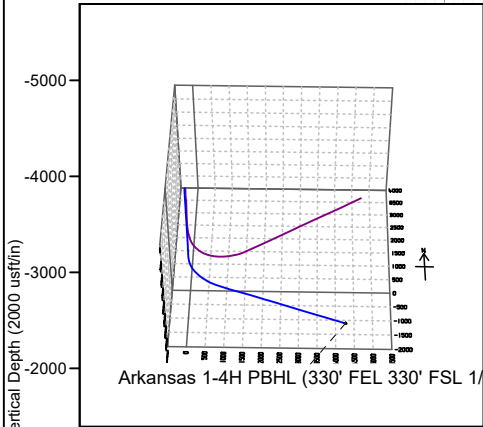
SECTION DETAILS

Sec	MD	Inc	Azi	TVD	+N/-S	+E/-W	Dleg	TFace	VSect
1	0.00	0.00	0.00	0.00	0.00	0.00	0.00	0.00	0.00
2	2682.00	0.00	0.00	2682.00	0.00	0.00	0.00	0.00	0.00
3	3494.50	65.00	111.00	3331.09	-148.19	386.05	8.00	111.00	413.52
4	3594.50	65.00	111.00	3373.36	-180.67	470.66	0.00	0.00	504.15
5	3917.62	90.85	111.00	3440.38	-292.94	763.15	8.00	0.00	817.45
6	7652.08	90.85	111.00	3385.00	-1631.06	4249.21	0.00	0.00	4551.50



Azimuths to Grid North
 True North: -0.72°
 Magnetic North: 1.81°

Magnetic Field
 Strength: 50033.9nT
 Dip Angle: 64.19°
 Date: 05/05/2024
 Model: IGRF2015



DESIGN TARGET DETAILS

Name	TVD	+N/-S	+E/-W	Northing	Easting	Latitude	Longitude
Arkansas 1-4H PBHL (330' FEL 330' FSL 1/2 SEC)	3385.00	-1631.06	4249.21	453684.94	2332004.21	36° 14' 23.942 N	96° 46' 2.353 W

